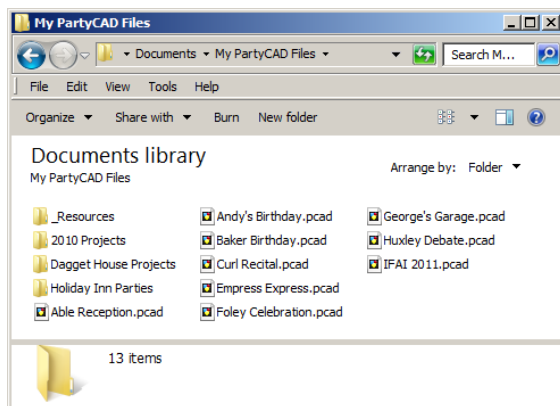


PartyCAD News

With version 12, PartyCAD has been reorganized to conform to modern Windows standards. If you are a long-time user of the program, you may be startled by some of the changes described below, but give PartyCAD 12 a try, and I think you will agree that the new version is more flexible and much easier to use than ever before.

Files

PartyCAD 12 is organized like most other Windows programs. Among other things, this means that your PartyCAD projects are now stored in My Documents in a *My PartyCAD Files* folder. Because of this, you can have both PartyCAD 12 and an earlier version of the program installed on the same machine.



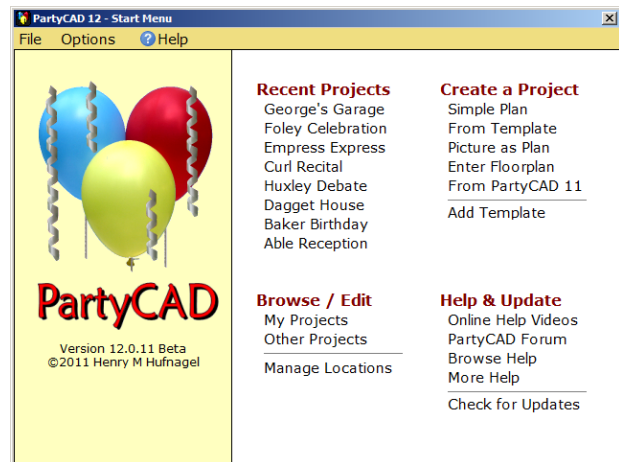
In earlier versions, your projects were organized into folders, some of which may have contained hundreds of files. In PartyCAD 12 each project is stored in a single *.pcad* file. If you double-click on such a file, PartyCAD 12 will open and display your project, ready for editing or printing.

With older versions, only one PartyCAD project could be open at a time. Now you can open as many as you like, which simplifies work when you need to make alternative designs for an event.

When PartyCAD 12 opens a design, it makes a local copy, and only when you save does this overwrite your original. This is not only a safer way to operate, but it means that when working on projects located at a remote location, such as on a server, the program is now far more responsive.

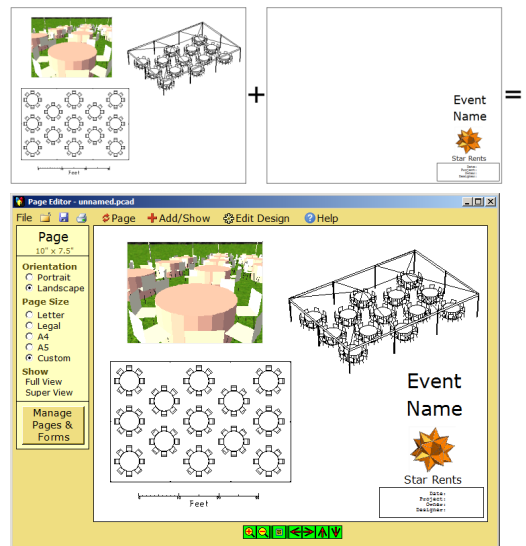
New Projects

The most common way to create a new project is to double-click the PartyCAD 12 icon on your desktop. This brings up the Start Menu:



Here you can create a project based upon a simple rectangular plan, a template containing stored information, a picture of your plan, by entering data describing the floor plan, or by importing a project from an earlier version of the program.

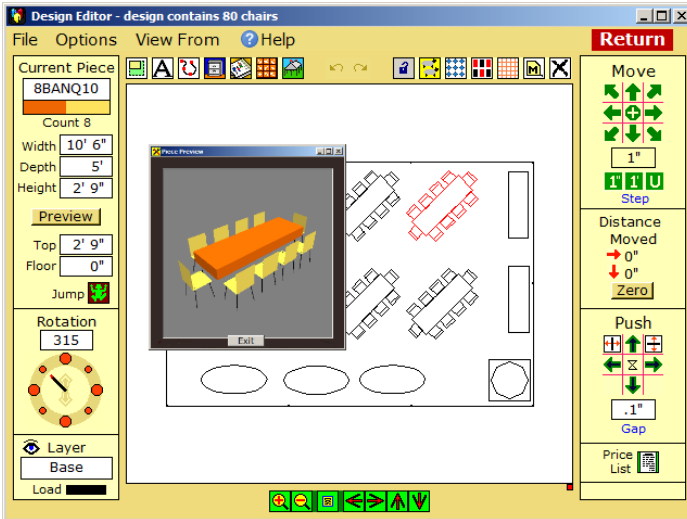
As PartyCAD 12 creates the new project, it merges in a form containing your company name and logo, and then displays an initial page in the Page Editor.



The Page Editor does the same sorts of things as the old Layout Page module, but the menu has been extensively reorganized to simplify these tasks.

Design Editor

Usually, the next step is to right-click on the design, which brings up the Design Editor, where you create the furniture design of your event.



module, except that, like all PartyCAD 12 menus, it has been adjusted to display better on modern high-resolution screens. There are a few small changes, but experienced PartyCAD users will have no trouble here.

The Design Editor does include one notable new feature... a Preview button lets you preview what your furniture will look like in 3D views.

Once your work in the Design Editor is complete, click the **Return** button and PartyCAD goes quietly to work to modify and redisplay the page in the Page Editor.

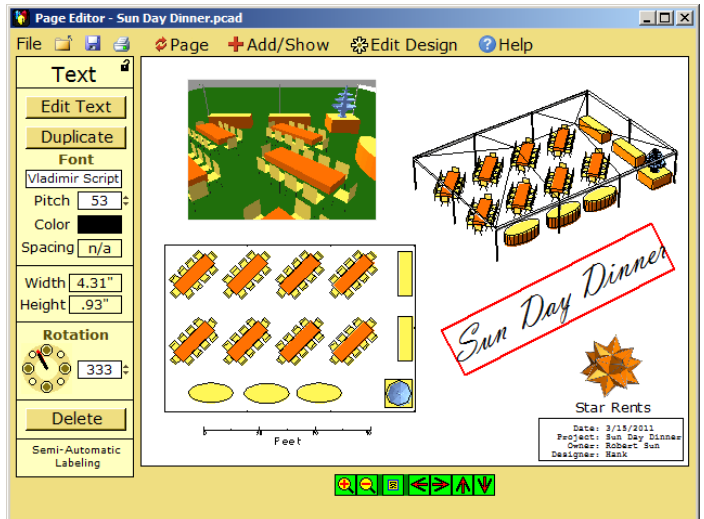
View Editor

Often the next step is to right-click a view and bring up the View Editor to modify a view on your page.





Page Editor

When you click **Return** in the View Editor, you are again returned to the Page Editor where you can complete the layout of your page.



changed of the menus in the program. In PartyCAD 12 each project and each page in the project contain one and only one design. Pages may also contain views, text, pictures, drawn lines and a scale. When you click on any of these item, a panel appears at the left showing available options for that item. For instance, clicking on text displays a panel for setting the font, size, color and rotation of the text. All kinds of text can be rotated in PartyCAD 12. To do so you can simply drag on the white box in the Rotation section of the panel.

Buttons at the top of the Page Editor perform special functions:

Print — Click , the Print icon, to produce a PDF file containing your page and display it in your PDF viewer program. From there you can print, save it as a PDF file on disk, or email  to a client.

Add/Show — The **Add/Show** button adds items to the page. For instance, pictures such as your logo can be imported, either from a file or from the windows clipboard. PartyCAD 12 can even crop away unwanted portions of the pictures you import.

File — Click the **File** button to add price lists, set print options such as annotations and watermarks, create web pages and movies, and change your page preferences.

Give it a Try!

The new way of doing things means there is no longer a need for the Main Menu or Project Manager. The old Party Wizard has become the much easier to use Template system. Yes, a lot has changed, but the new version does everything PartyCAD 11 could do and with a whole lot less head scratching, so why not give PartyCAD 12 a try?